



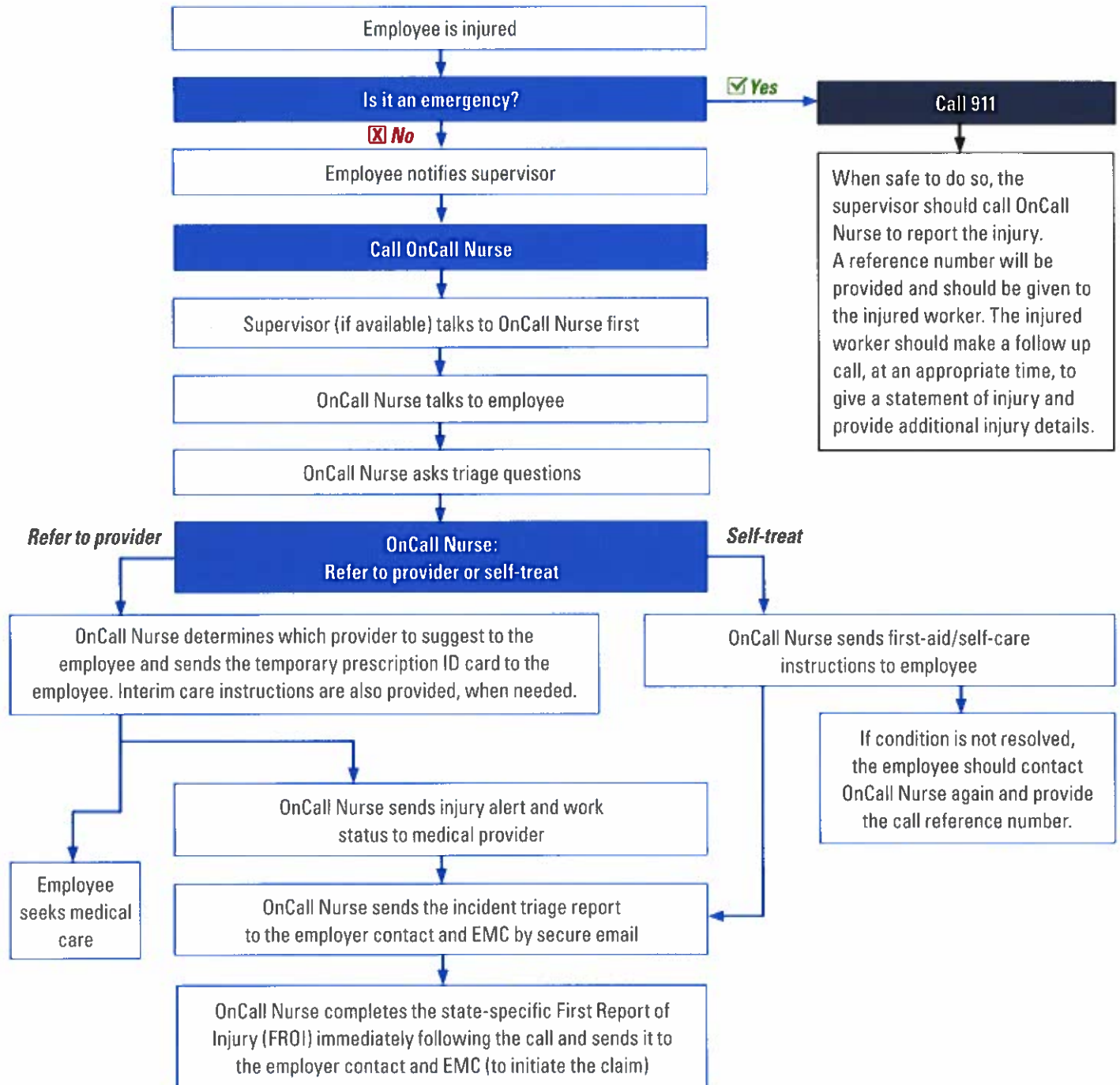
If injured at work, tell your supervisor right away and
call EMC OnCall Nurse at
1-844-322-4668



For life-threatening injuries, call 911.



EMC OnCall Nurse Injury Flowchart



EMC OnCall Nurse

Using EMC OnCall Nurse is easy with your mobile phone. **Here's how to get started:**

Once your company is signed up for EMC OnCall Nurse, go to emcins.com/oncallnurse from your mobile device.

On the mobile site, you'll need to enter your policy number in order to gain access.

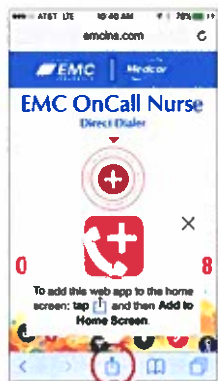
1. After entering a policy number, you'll be directed to the OnCall Nurse site where you can create a shortcut to the page.

You can use the "Call Now" button on this website to call EMC OnCall Nurse directly. The phone number will also be visible if you want to manually dial.

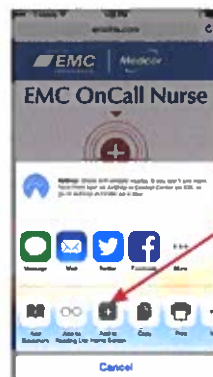


To create a shortcut on your mobile phone that looks like a standard app icon, follow these steps:

Apple iPhone



1. Visit EMC OnCall Nurse [emcins.com/oncallnurse]
2. At the bottom of the screen, select the square with the arrow



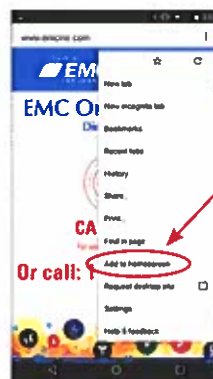
3. Of the options shown, select **Add to Home Screen**
4. You will see the shortcut on your home screen



Android Devices



1. Visit EMC OnCall Nurse [emcins.com/oncallnurse]
2. At the top right corner, tap the three dots



3. Of the options shown, select **Add to Home Screen**
4. You will see the shortcut on your home screen



For more information, contact your local EMC insurance agent.

EMC Insurance Companies
717 Mulberry Street • Des Moines, IA 50309
800-447-2295 • 515-280-2511

emcins.com

